



DEALERWEBINAR

**TS200-1600**

## TS200 Comparison vs Epson

The Mimaki TS200-100 offers production level quality and features found on our flagship products integrated into an affordable, lower volume platform, making high-end 64" sublimation accessible and cost effective.

Mimaki TS200



VS

EPSON F6370H



INNOVATIVE SYSTEMS, PROVEN RESULTS

Mimaki

# Mimaki TS200-1600 vs EPSON F6430 Series

## Key Specification Advantages

Technical superiority of the Mimaki TS200-1600 over competitor offerings:



Features	Mimaki TS200	Epson F6370H Series
Maximum Print Width	1,610 mm (63.4 inches)	1,118 mm (44 inches)
Ink System & Gamut	4 color configuration (CMYK) 8-color configuration (Sb411) with CMYK + Orange, Violet, Fluorescent Pink, & Fluorescent Yellow available in one machine.	1,118 mm (44 inches) 4-Color (CMYK) with UltraChrome DS Ink. Fixed 6-color choice with UltraChrome DS 6 Ink. Customers must choose between Lc/Lm, Or/Vi, or Fp/Fy at configuration; the choice is not user changeable.
Maximum Print Speed	70 m²/h (Realistic Production: 36 m²/h)	F64370: 78.3 m²/h F64370H: 38.8 m²/h
Key Reliability Technology	Nozzle Recovery System (NRS) and Dot Adjustment System 1 (DAS1) for automated adjustments and uninterrupted printing.	Nozzle Verification Technology (NVT) monitors nozzle health.

- ✓ **High Speed Printing**
  - Superior productivity in 4-color and 8-color modes
- ✓ **Media Width:**
  - Wider media width capability
  - Support for larger format prints
- ✓ **Roll Capacity:**
  - Higher roll weight capacity
  - Extended printing length per roll
- ✓ **Ink Capacity**
  - Larger ink capacity
  - Uninterrupted printing is possible

# Consider the Mimaki TS200

## 1. Wider Color Expression & Ink Options

The Mimaki TS200 supports an **extended ink set** (including orange, violet, fluorescent pink, and fluorescent yellow) that expands its colour gamut more than typical CMYK-only setups, giving it **richer, more vibrant print results** for certain applications like sportswear or custom fashion items. This can translate to more striking or eye-catching results in products where unusual colors matter.

## 2. Built-in Production Reliability Features

Mimaki's TS200 includes things like **Nozzle Recovery System (NRS)** to keep printing even if a nozzle fault occurs, reducing workflow interruptions. It also has automated quality systems like **Dot Adjustment System (DAS)** and ink-saving modes that help maintain consistent quality with less manual intervention.

## 3. Scalability & Workflow Efficiency

The TS200 series uses **large 2-liter ink packs** with degassed design, which reduces downtime for changeovers and helps maintain consistent prints — this is beneficial in busy production environments. Remote monitoring tools (like Mimaki's PICT cloud monitoring) let operators **track status and ink usage remotely**, which can help in planning large jobs or multiple machines.

## 4.3 year warranty (Standard Service, North America)

3 Year Comprehensive service coverage (1 year Mimaki Total care, and 2 year Mimaki Parts + Service coverage).

# TS200 RIP and Profiling Support

## RIP Software & Profiling Flexibility

### Wasatch Driver Support

-Available for 4-color and 8-color configurations

### Onyx Driver Support

-Available for 4-color and 8-color configurations

-Currently only one profile available

8-color configuration\*

## Artista Color Collection

### Fluorescent Support

-Dedicated Artista collection for fluorescent ink printing enables vibrant, high-impact fluorescent colors with improved control

Optimized for textile and dye-sublimation applications

## Artista Color Collection

Color Chart Data Contains 520 Color Swatches (provided as EPS data)

Artista Color Swatches Function as Spot Colors in Adobe Illustrator

By using the swatch files the RIP will recognize them and perform spot color replacement automatically

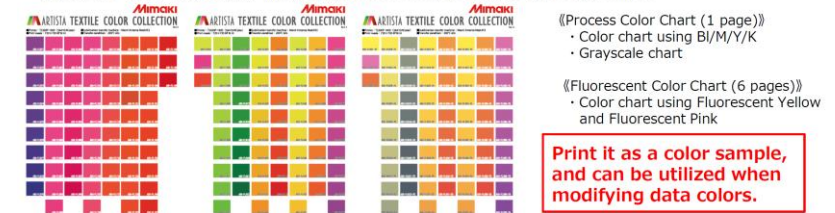
Six Fluorescent Color charts: Using Fluorescent Yellow & Pink

One Process Color Chart: Color Chart using only BI/M/Y/K + Grayscale Chart

### Compatible with RasterLink and TXLINK Software\*

#### ■ Color Chart Data (Provided in EPS format)

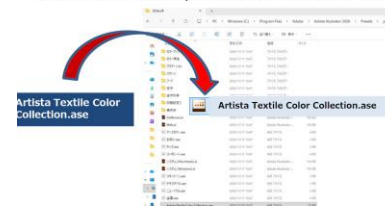
- Provides color chart data including process colors and fluorescent colors



\*Color charts comprise 7 pages total: process color chart and fluorescent color chart

#### ■ Swatch Color File “Artista Textile Color Collection.ase”

- Install the color specification file into Illustrator's swatch colors



[Installation Method] \*Administrator privileges are required

① Open the folder containing Illustrator on your computer, then open the Swatches folder.

Local Disk (C:) ⇒ Program Files ⇒ Adobe ⇒

Adobe Illustrator 2026 ⇒ Presets ⇒ ja\_JP ⇒ Swatches

② Copy the file “Artista Textile Color Collection.ase” into the Swatches folder.

③ “Artista Textile Color Collection” will be added to Illustrator's swatch library.



DEALERWEBINAR

**TXF300 Series**

# Mimaki TXF300-75 vs Roland TY-300

**Mimaki**  
**TXF300-75**



*Confidential*

VS

**Roland**  
**TY-300**



Item	TXF300-75	TY-300
Machine Price	\$15,995 (US)	\$19,995 (US)
Head	2 Head (staggered)	2 Head (staggered)
X,Y Resolution	X:720, 1,440 dpi Y: 720, 1,080, 1,440 dpi	Max 1,200 dpi
Ink set	PHT50 5C (CMYK+W)	S-PG2 5C (CMYK+W)
Ink supply	600mL Eco cartridge (degassed aluminum pack) CMYK x1 500mL Eco cartridge (degassed aluminum pack) W x4	500ml cartridge CMYK x1 White x2
Max. media width	810 mm	736 mm
Maxi. printing width	800 mm	762 mm
Max. roll size	Max. 45kg Max. Φ250mm	Max. 30kg Max. Φ250mm
Paper tube inner diameter	2 inches、3 inches	2 inches、3 inches
Media Cutter	○	○
Heater	Pre/Print/Post (Max. 50℃)	Print : 30~45 °C Dryer : 30~50 °C
Maintenance cartridge	○	○
Noise	Standby : 45dB or less During Print : 65dB or less	Standby : 58dB or less During Print : 63dB or less
Power specifications	AC100~120V/200~240V±10%, 50/60Hz±1Hz	AC100~120V/200~240V±10%, 50/60Hz±1Hz 6.4/3.0A
Power consumption	AC100~120V : 1,000W or less、 AC200~240V : 1,300W or less x1	During Print : 840W Sleep mode : 70W
Facility environment	Operating temperature : 20~30℃ Humidity : 35~65%Rh (No condensation)	) Operating temperature : 20~28℃ Humidity : 40~60%Rh (No condensation)
RIP Software	RasterLink7	VersaWorks、Roland DG Connect

INNOVATIVE SYSTEMS, PROVEN RESULTS

**Mimaki**

## 3 Key Points for choosing the TxF300-75

### 01. High film versatility

TxF300 can produce **deep and even solid colors**, even with cyan colors

TY-300 exhibits **uneven white ink coverage**, allowing dark fabrics to show through

### 02. 15% lower running costs

TY-300 is **high running cost** due to high ink cost and choice of film

### 03. TY-300 stops about every 3 hours

TY-300 **needs ink changes** so often that operators must stay with it

TxF300 **enables uninterrupted production** with over 1.5x longer continuous operating time



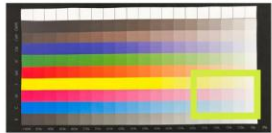
# Delivers Powerful White Ink Coverage

01.

TxF300 produces **strong white on any film,**  
**preventing dark fabrics from showing through.**

*Confidential*

<Image Quality Comparison Using KODAK Film>



※The above results are based on Mimaki's in-house evaluation and Mimaki does not guarantee the content.  
※Output results may vary depending on the combination and compatibility of the film and powder used. Prior testing is recommended.

26

INNOVATIVE SYSTEMS, PROVEN RESULTS

Mimaki

# Cost Comparison

## 02. Running Cost Comparison①

Data size :  
300mm x 400mm



When using Roland genuine film and producing in practical mode, the TY-300

	TxF300-75 720x720dpi 6pass 7.5sqm/h		TY-300 600x1200dpi 6pass 10.9sqm/h	
Ink price	PHT50 CMYK	\$113.33/L	S-PG2 CMYK	\$199.98/L
	PHT50 White	\$136.00/L	S-PG2 White	\$169.98/L
DTF Film price	STS Inks (24"x328ft)	\$0.30/sqft	Roland 30"x328ft	\$0.50/sqft
DTF Powder price	STS	\$0.041/g	Roland	\$0.038/g
Total Ink consumption	720x720 6P	8.834cc	600x1200 6P	7.83cc

<Material cost per T-shirt>

Ink	Color 2.21cc	\$1.15	Color 1.98cc	\$1.39
	White 6.624cc		White 5.85cc	
Film	1ft x 1.3ft	\$0.39	1ft x 1.3ft	\$0.65
Powder*	8.834g	\$0.37	7.83g	\$0.31
Material cost per T-shirt	\$1.91/T-shirts		\$2.35/T-shirts	

\*Powder usage amount = ink consumption amount

Confidential

NCSA

The ink price for the S-PG2 is more than 1.2 times that of the PHT50.

Roland genuine film and powder are more expensive than film commonly used in the market.

Cost Difference  
About \$0.44

Production of 10,000 T-shirts per month

TxF300 would be

**\$4,400/month cheaper**

Confidential

03.

TY-300 stops operation approx. every 3 hours\*

When operating in Production Mode\*

[Data]  
300mmx300mm



<Time until white ink runs out>

TxF300 Production 7.5sqm/h



TY-300 Production 10.9sqm/h



Higher print speed, but the ink runs out faster.

TY-300 High Quality 4.89sqm/h



Slower speed, but higher ink consumption per print reduces the number of prints.

Frequent ink replacement is required, increasing operator workload.

For this comparison, we assume fresh white ink cartridges. Ink consumption and time required for regular maintenance are not included.

# Mimaki TXF300-75 vs Epson SC-G6000

**Mimaki**  
**TXF300-75**



VS

**EPSON**  
**SC-G6000series**



Item	TXF300-75	SC-G6000series
Machine Price	\$15,995 (US)	\$14,495 (US)
Head	2 Head (staggered)	1 Head
X,Y Resolution	X:720, 1,440 dpi Y: 720, 1,080, 1,440 dpi	Max 1,200x600 dpi
Ink set	PHT50 5C (CMYK+W)	UltraChrome DF 5C (CMYK+W)
Ink supply	600mL Eco cartridge (degassed aluminum pack) CMYK x1 500mL Eco cartridge (degassed aluminum pack) W x4	1,600ml ink pack CMYK x1 White x1
Max. media width	810 mm	900 mm
Maxi. printing width	800 mm	894 mm
Max. roll size	Max. 45kg Max. Φ250mm	Max. 10kg Max. Φ150mm
Paper tube inner diameter	2 inches、3 inches	2 inches、3 inches
Media Cutter	○	○
Heater	Pre/Print/Post (Max. 50°C)	×
Maintenance cartridge	○	○
Noise	Standby : 45dB or less During Print : 65dB or less	During operation : 51.1dB
Power specifications	AC100~120V/200~240V±10%, 50/60Hz±1Hz	AC100~120V/200~240V, 1.0A 50/60Hz
Power consumption	AC100~120V : 1,000W or less、 AC200~240V : 1,300W or less x1	During Print : about 65W Sleep mode : about 6W
Facility environment	Operating temperature : 20~30°C Humidity : 35~65%Rh (No condensation)	Operating temperature : 15~25°C Humidity : 40~60%Rh (No condensation)
RIP Software	RasterLink7	Epson Edge Print PRO

### **01. High image quality on any film**

The G6000 series exhibits banding and graininess with most films.

Increasing resolution does not improve image quality

### **02. High profits due to 1.2 times higher productivity**

The G6000 series uses inexpensive ink but has low productivity.



Confidential

02.

The SC-G6000 series has lower ink costs, but **the TxF, with over 1.2 times the productivity, is more profitable**

Data size :  
300mm x 400mm



Operating hours:  
8 hours/day

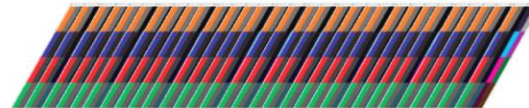
**TxF300-75**

720x720dpi 6pass **7.5 sqm/h**

Maximum print width : 800mm



800mm

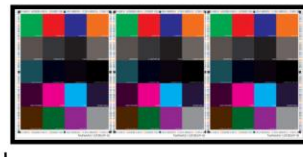


**496 T-shirts/day**

**G6000series**

600x600dpi 6pass **5.6 sqm/h**

Maximum print width : 894mm



900mm



**372 T-shirts/day**

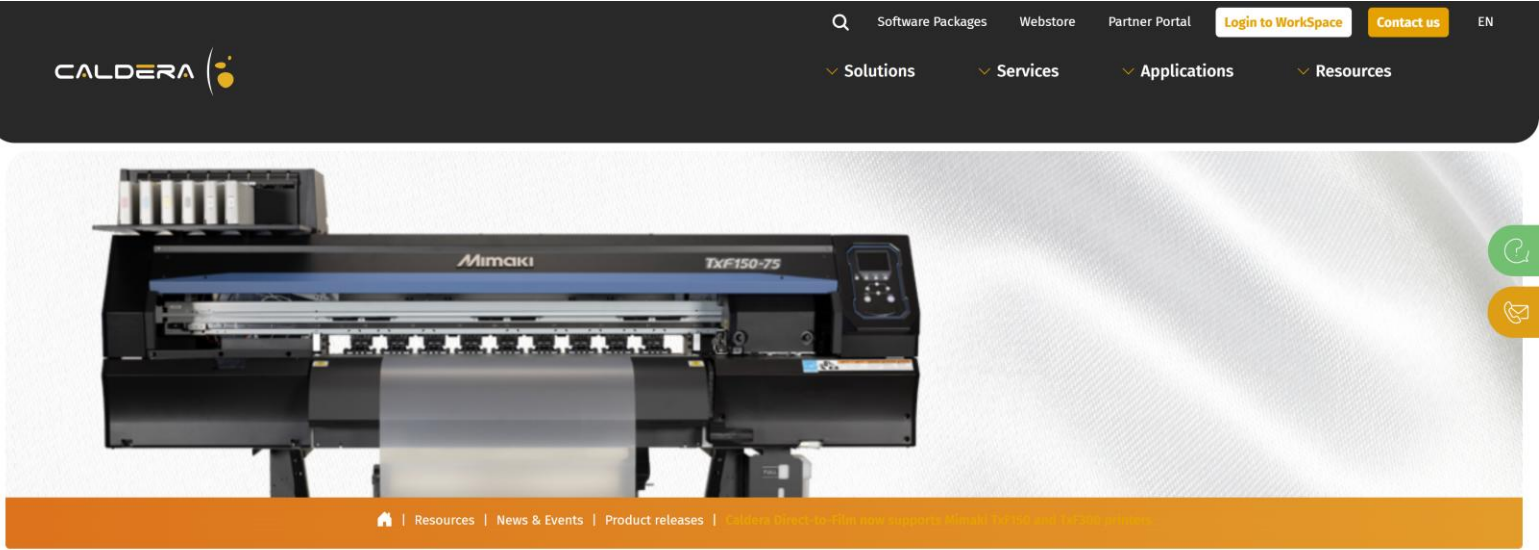
**Productivity  
1.2 times or  
more**



DEALERWEBINAR

**Compatible Software for the TXF300 Series**

# Caldera DTF Software Support



We're happy to announce that [Caldera Direct-to-Film](#) software now fully supports the [Mimaki TxF150](#) and [TxF300](#) printers. This integration improves the capabilities of both Caldera's RIP software for DTF and Mimaki's high performance textile printers, offering seamless workflow, exceptional print quality, and increased productivity.

Whether you're in the market for a compact solution like the TxF150 or the high-volume capabilities of the TxF300, Caldera DTF ensures you can get the most out of your Mimaki printer. This upgrade is perfect for print shops looking to improve efficiency and print high-quality textiles with ease. Don't miss out on the opportunity to streamline your workflow with Caldera and Mimaki's advanced technology.



## BEGINNER-FRIENDLY INTERFACE

Caldera **Direct-to-Film** software offers a **simple and easy-to-use interface** with only the features that matter most in DTF printing, making it easy to navigate and operate, even for beginners.



## AUTONOMOUS LEARNING

With **built-in self-training guides** and Caldera's educational content, users can learn and improve their DTF printing skills, all within the interface—no need for technical support.



## FLEXIBILITY FOR ALL USERS

Caldera **Direct-to-Film** works on **macOS**, **Windows** and **Linux** and supports multiple file formats, ensuring flexibility for different users and printing needs.





# Flexi DTF Software Support

## Precision Features That Simplify Every Step



Flexi EnRoute Business Tools Support & Training News & Events

CONTACT US RESELLERS

Search...

MySAI World Regions About SAI

### Revolutionize Your DTF & DTG Workflow



### Flexi<sup>®</sup> DTF PRO

POWERING PROFESSIONAL DTF | DTG

A purpose-built solution engineered for DTF and DTG production to save both time and ink. Get started faster, print smarter, and deliver results that truly stand out.



#### CREATE

Design artwork or import files effortlessly with Flexi's built-in design tools



#### PREPARE

Set up halftoning, white ink layers, and gang sheets with intuitive controls



#### PRODUCE

Print and cut with precision for flawless DTF transfers and DTG prints

[Flexi DTF Pro - ThinkSAI.com](https://www.thinksai.com/Flexi-DTF-Pro)

INNOVATIVE SYSTEMS, PROVEN RESULTS

Mimaki<sup>®</sup>



End of presentation. **Thank you.**



4851 Thurmon Tanner Pkwy, Ste. 100  
Flowery Branch, GA 30542



[www.mimakiusa.com](http://www.mimakiusa.com)



(678) 730-0170